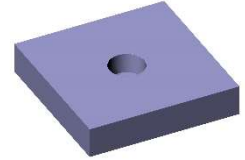


M4 & M6 Squirrel® Fixings Installation Guide



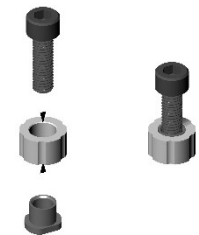
STEP 1 :

- Rout a 14mm diameter x 8mm deep pocket.
- Clean the pocket with De-Natured Alcohol.
- Ensure that the hole is no more than 8mm deep when using 12mm Corian®



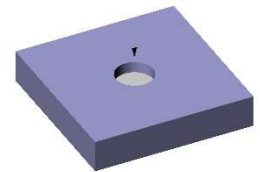
STEP 2 :

- Clean the parts with De-Natured Alcohol.
- Assemble Squirrel® parts with the aid of a screw.



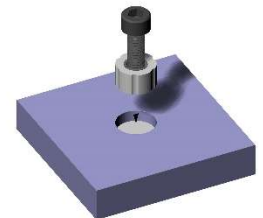
STEP 3 :

- Check the Squirrel Fixing® fits in to the hole.
- Half fill pocket with Corian® adhesive.



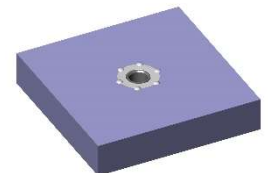
STEP 4 :

- Place Squirrel® fixing into pocket.
- Give fixing a ¼ turn.



STEP 5 :

- Allow approx. 30-40 mins to harden.
- Do not remove excess adhesive.



STEP 6 :

- Once adhesive has hardened remove with a sander.
- Bring to required finish with usual recommended sanding process.
- Do not allow adhesive to over-heat while sanding.

