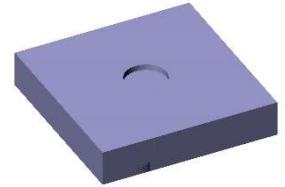


# M4 & M6 Semi-Recessed Squirrel® Fixings Installation Guide



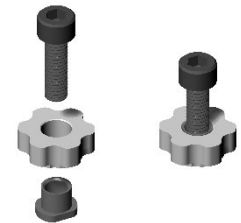
## STEP 1 :

- Rout a 14mm diameter x 2mm deep pocket.
- Clean the pocket with De-Natured Alcohol.
- Ensure that the hole is no more than 2mm deep when using 6mm Corian®



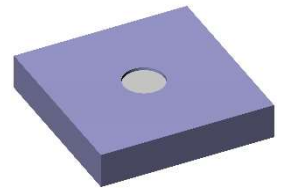
## STEP 2 :

- Clean the parts with De-Natured Alcohol.
- Assemble Squirrel® parts with the aid of a screw.



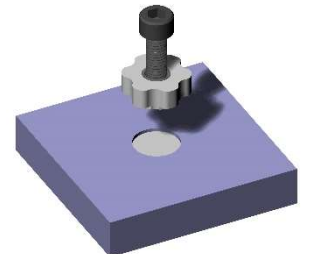
## STEP 3 :

- Check the Squirrel Fixing® fits in to the hole.
- Half fill pocket with Corian® adhesive.



## STEP 4 :

- Place Squirrel® fixing into pocket.
- Give fixing a ¼ turn.



## STEP 5 :

- Allow approx. 30-40 mins to harden.
- Do not remove excess adhesive.

